



# Pui O, Lantau Island Hong Kong

2016 November 17 (Thursday) and 2016 November 28 (Monday)



Wow, the reflection !



Two different days.....two different weather.....two different views (Top 17, Bottom 28)







2016 November 28



2016 November 17



From the east end of the beach Nov 17



From the west end of the beach Nov 28





Nov 17 – looking west





Nov 28 – looking east



Nov 17 – A camping day for kids









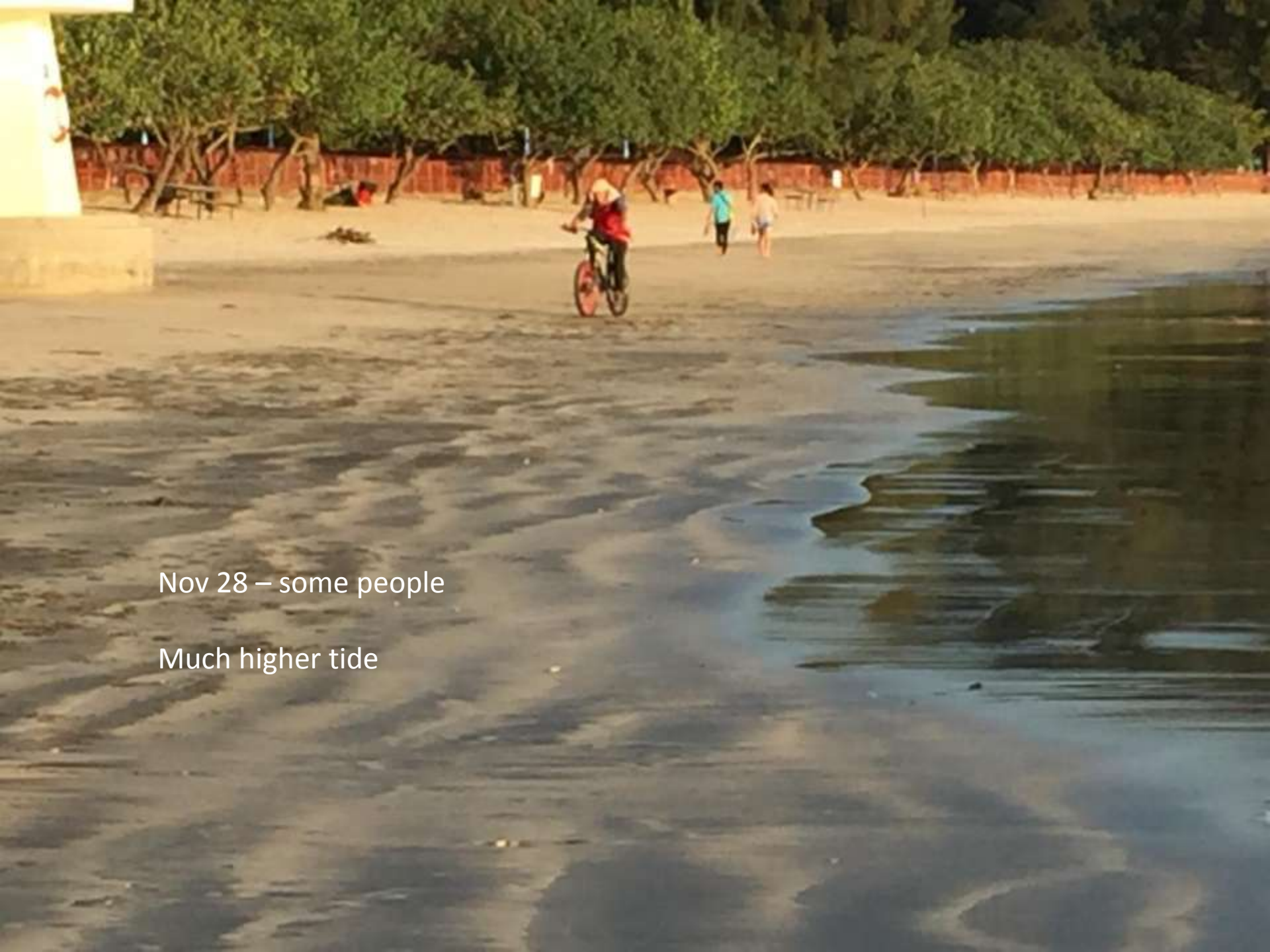
Nov 17 – more people





Nov 17 – lower tide





Nov 28 – some people

Much higher tide





Nov 17

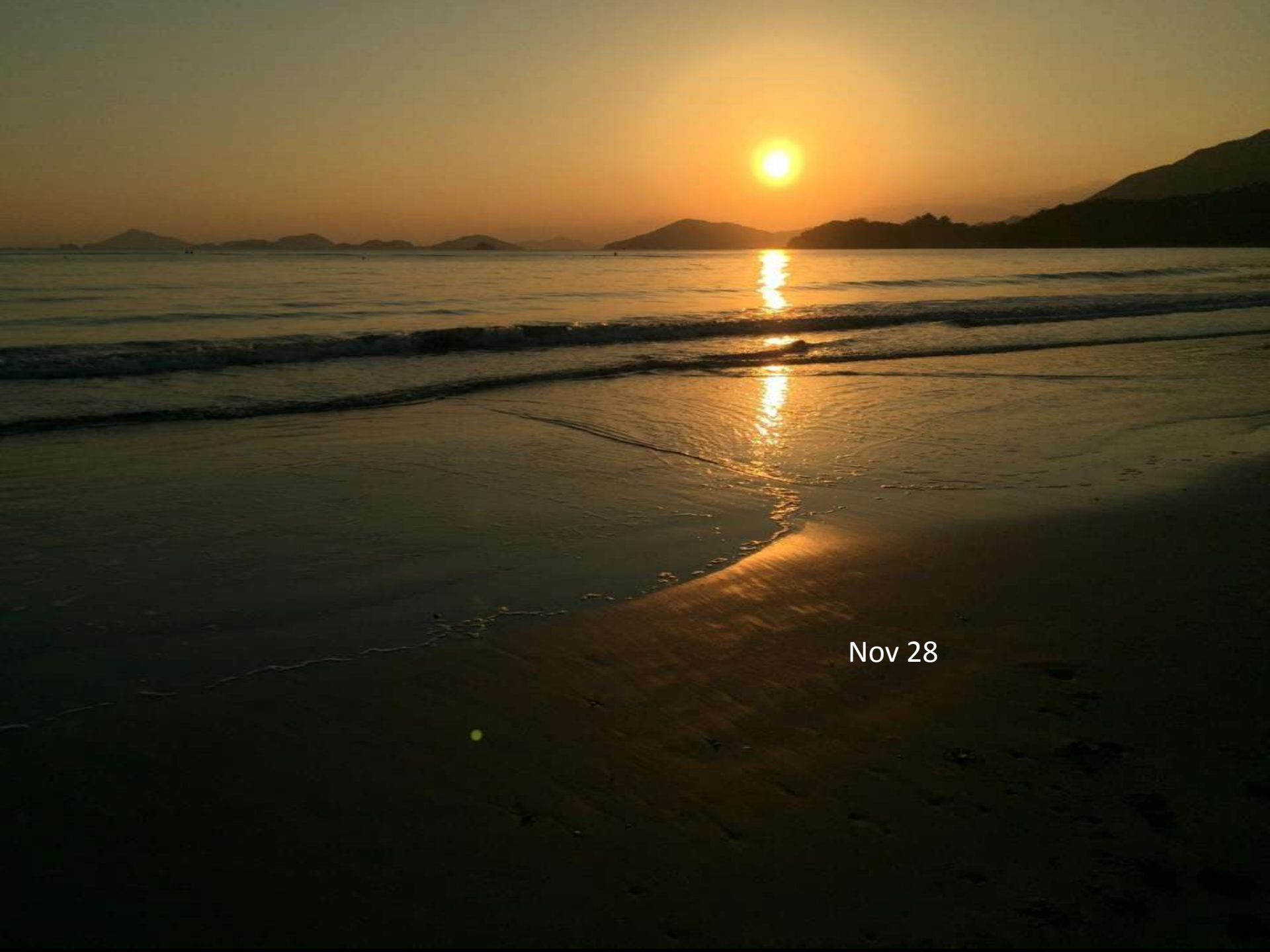


Nov 17



Nov 17





Nov 28



Nov 28



Nov 28





Nov 28



Nov 17



Nov 28

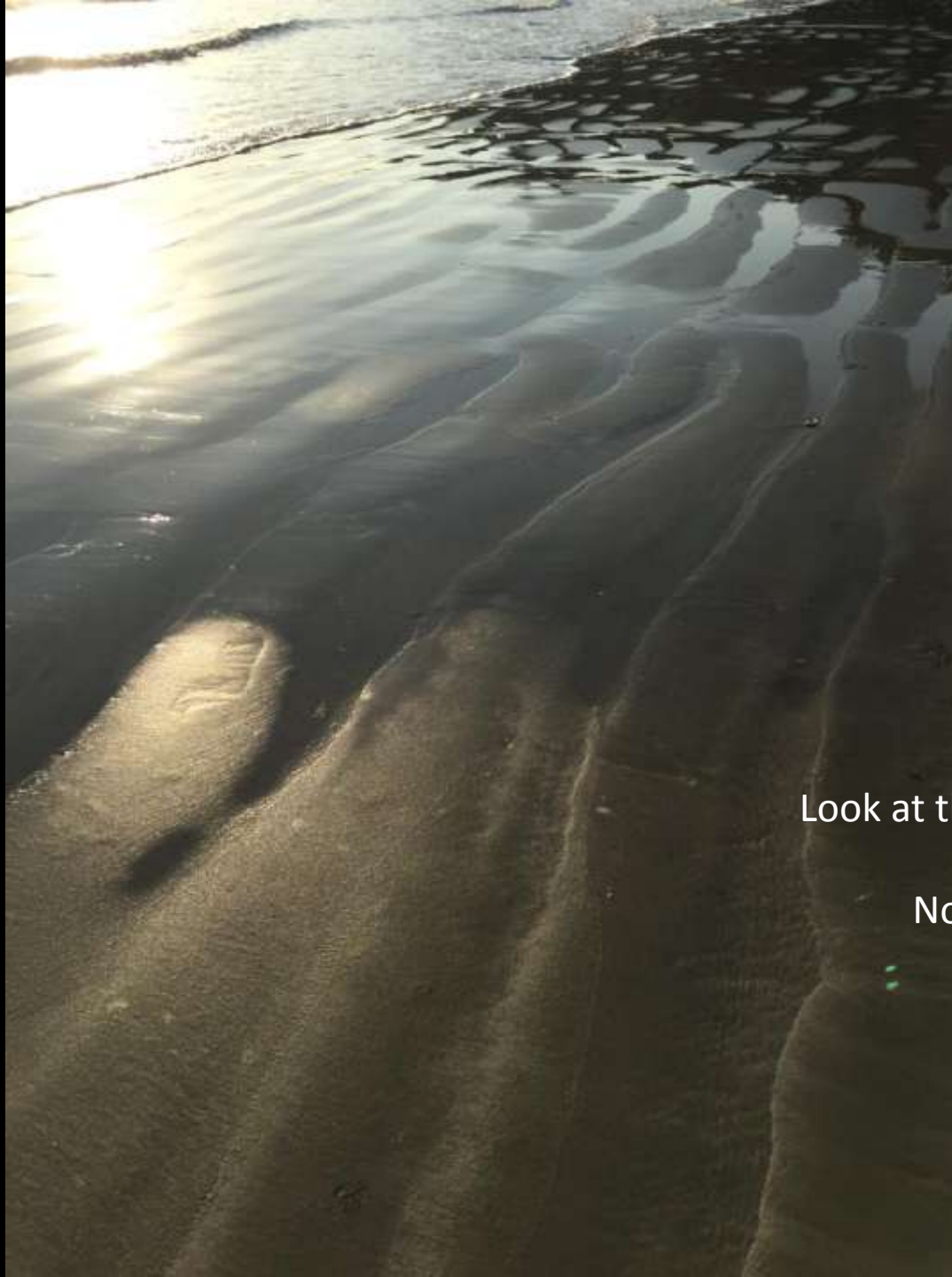






Nov 28





Look at the patterns

Nov 28



The patterns

Nov 28





The patterns

Nov 28





The patterns

Nov 28





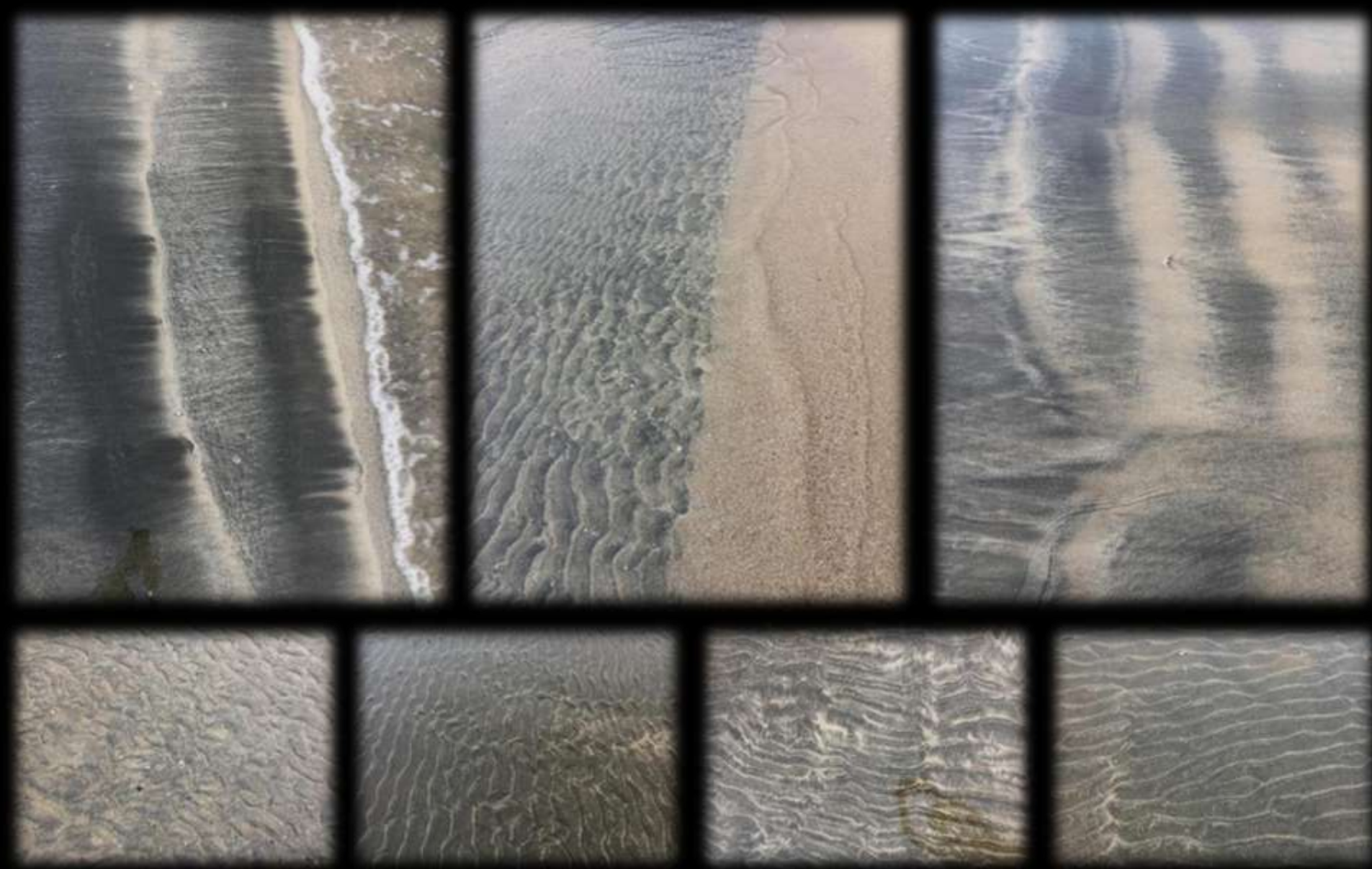


The patterns

Nov 28







The patterns

Nov 17



The patterns

Nov 17







The patterns

Nov 17







The patterns

Nov 17



On the way to the beach

Nov 17





Pui O Village

Nov 28





Beautiful Pui O



Thanks for coming with me



Ciao