



The Riverdale Farm

2016 May 28



A 7.5 acres' farm in the city
Much supported by the community of CabbageTown where it is located






There are outdoor ranges

...and barns for
animals and
poultry





There was sheep
sheering on the
day of my visit

“All done! Ready to
'go home'”



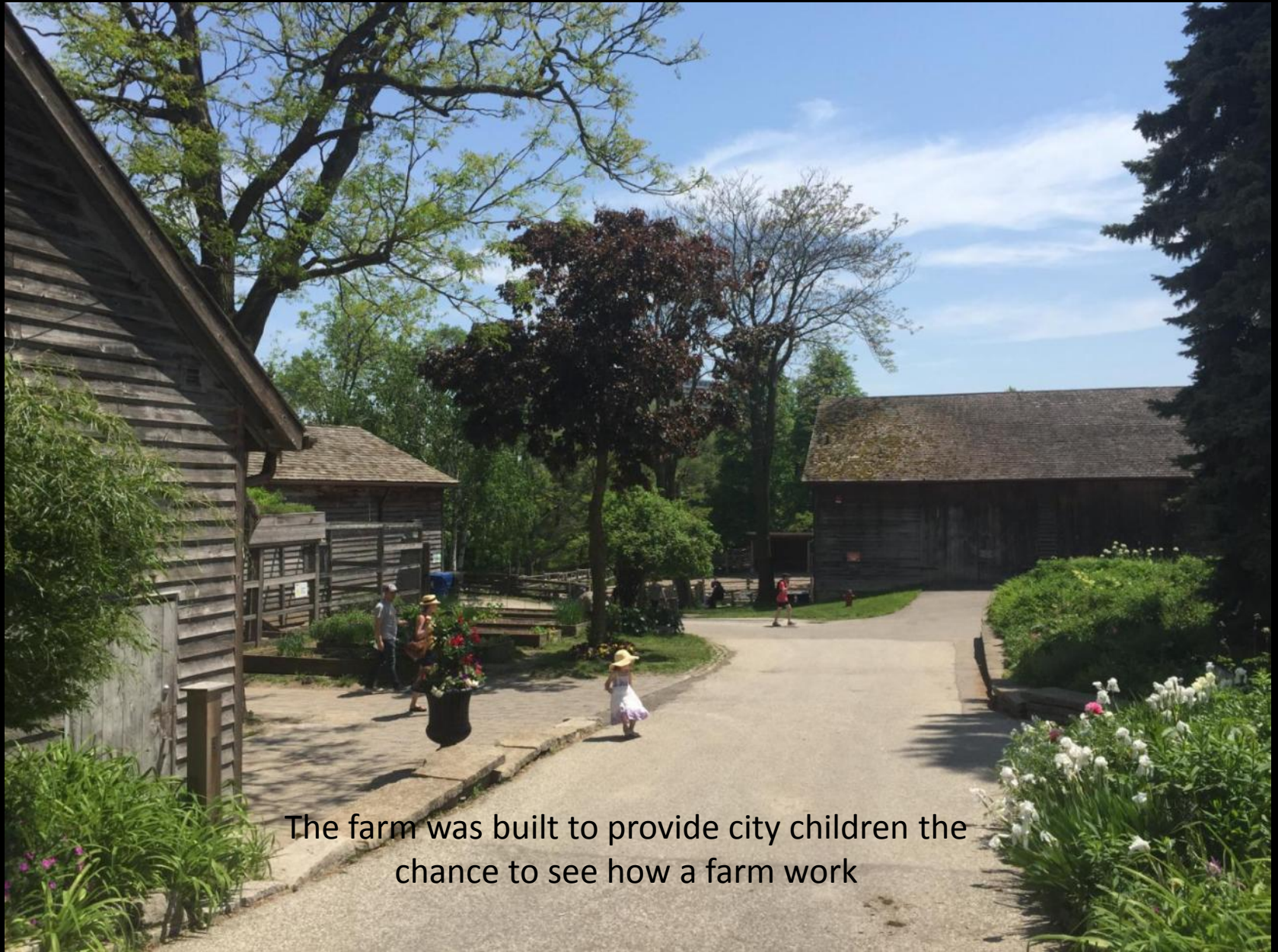
The farm is a garden in itself



Benches are along the pathway for people to rest



It is not a strenuous exercise to walk around the whole farm




The farm was built to provide city children the chance to see how a farm work



Some adults come the green way to take their child there



The Francey Barn is a rare type of architecture, known as a
Pennsylvania Bank Barn
.....originally built in 1858 in the Markham Township
.....relocated here in 1977

A photograph of a large, dark wooden barn with its double doors open. Several people are standing in the paved area in front of the barn. A large, leafless tree stands behind the barn, and a smaller tree with green leaves is to the left. The sky is blue with some clouds. The barn's interior is dark, and a string of small white flags hangs from the open door. A stack of metal chairs is visible near the right door.

The upper
level is for
hay, straw
and food
for animals

...the lower,
for animals



The Simpson House is a reproduction of the original Francey farmhouse to complement the Francey Barn across it



One end of the
Simpson House
is an eatery



...with beautiful
orchids planted
outside





The Pig and Poultry Barn

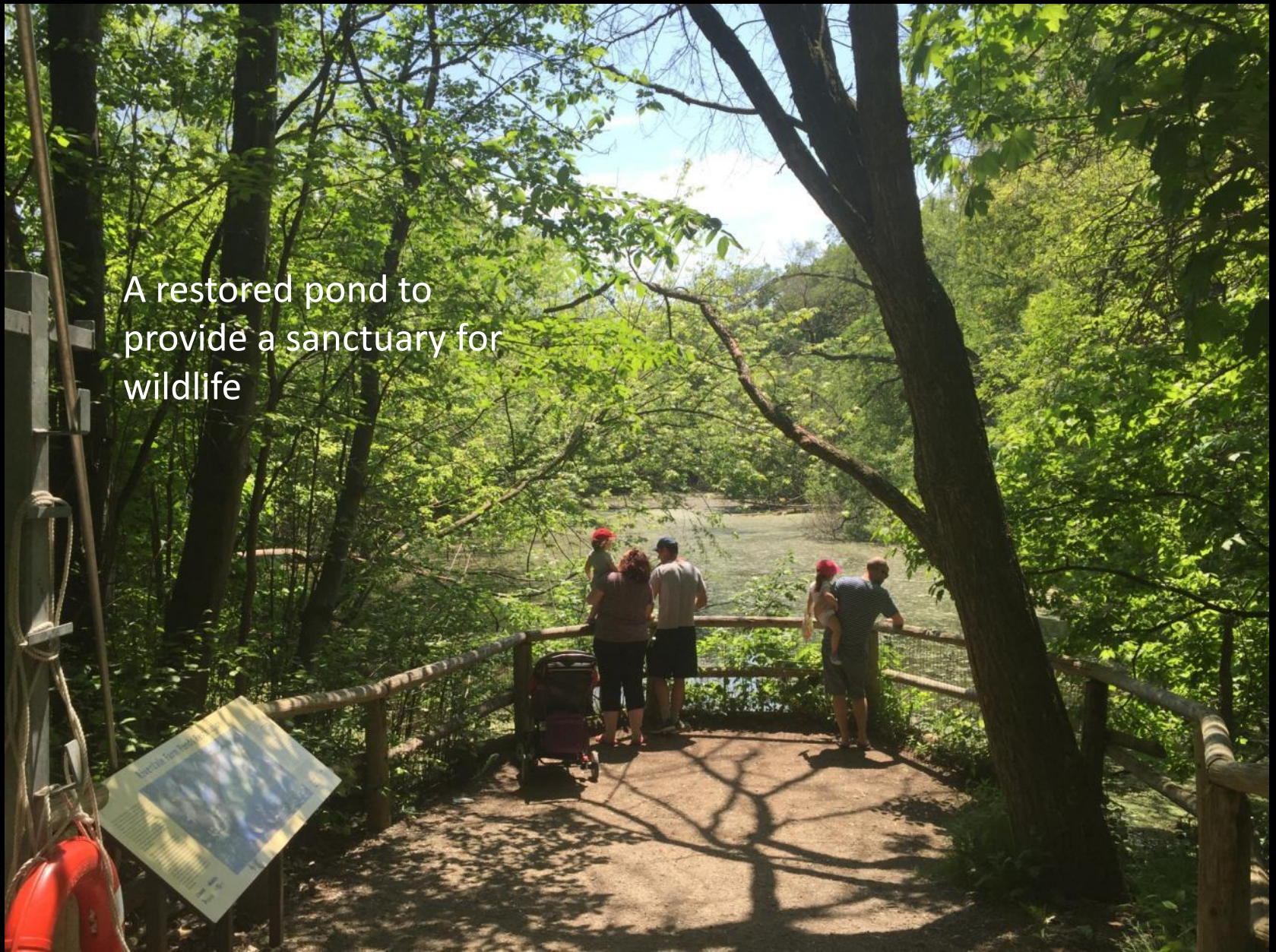


The Driveshed with
the lower level
open to the public
for events and
seasonal education
/ interpretive
programs



The Donnybrook Ruin
from the
Old Riverdale Zoo
(1894-1974)

A restored pond to
provide a sanctuary for
wildlife





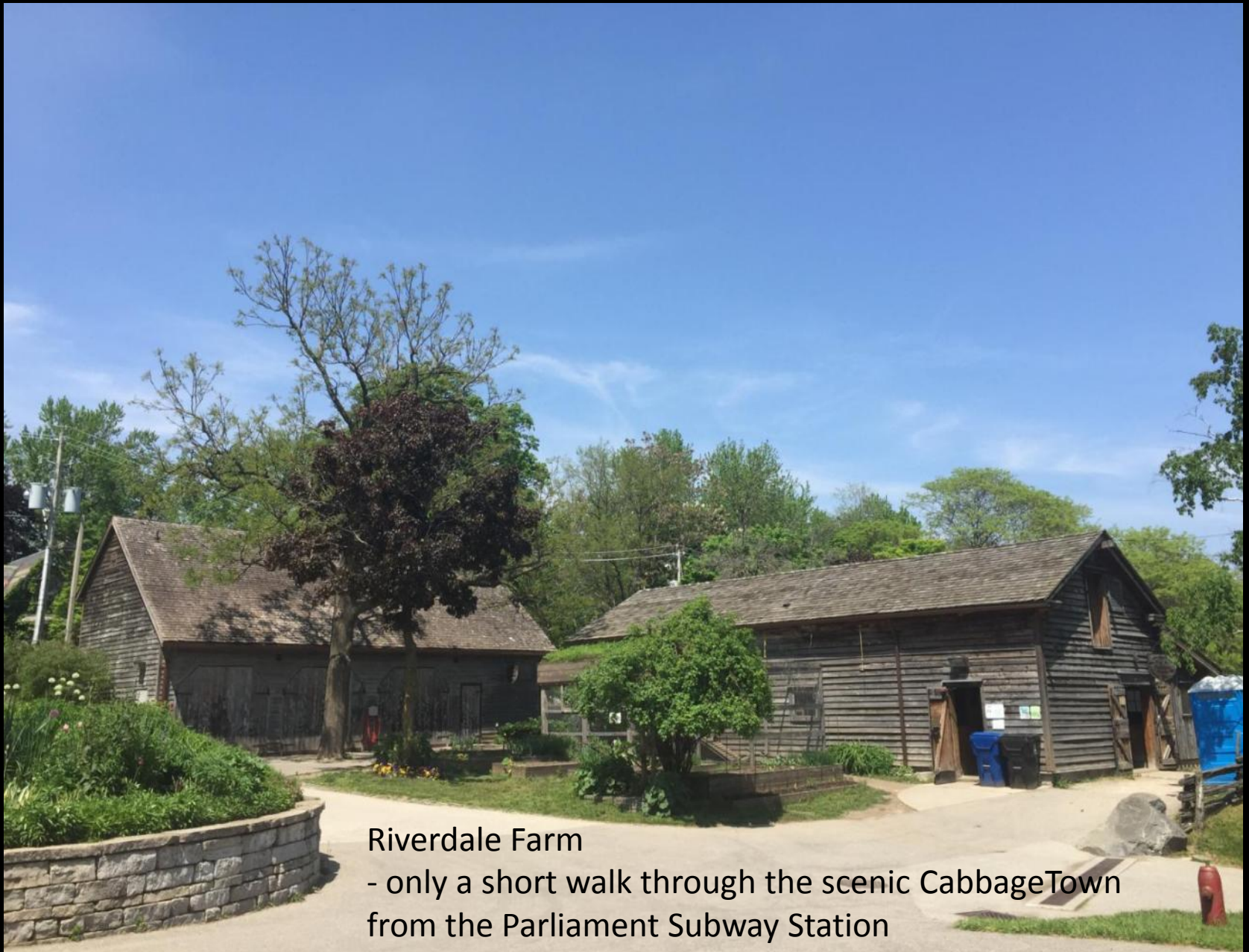
Inhouse and portable toilets are abound



To the west of the Farm is a park



To the north is the Toronto Necropolis
..... a fine example of Gothic Revival Architecture



Riverdale Farm

- only a short walk through the scenic CabbageTown
from the Parliament Subway Station



A Farm-cum-Park worth visiting